

Ancient Bronze Pieces

Lovely Swan Decorations

Artist: unknown
Date: II century B.C.
Dimensions: 31 cm high and
29,1 cm high
Material: bronze
Inventory no: 65674-65675

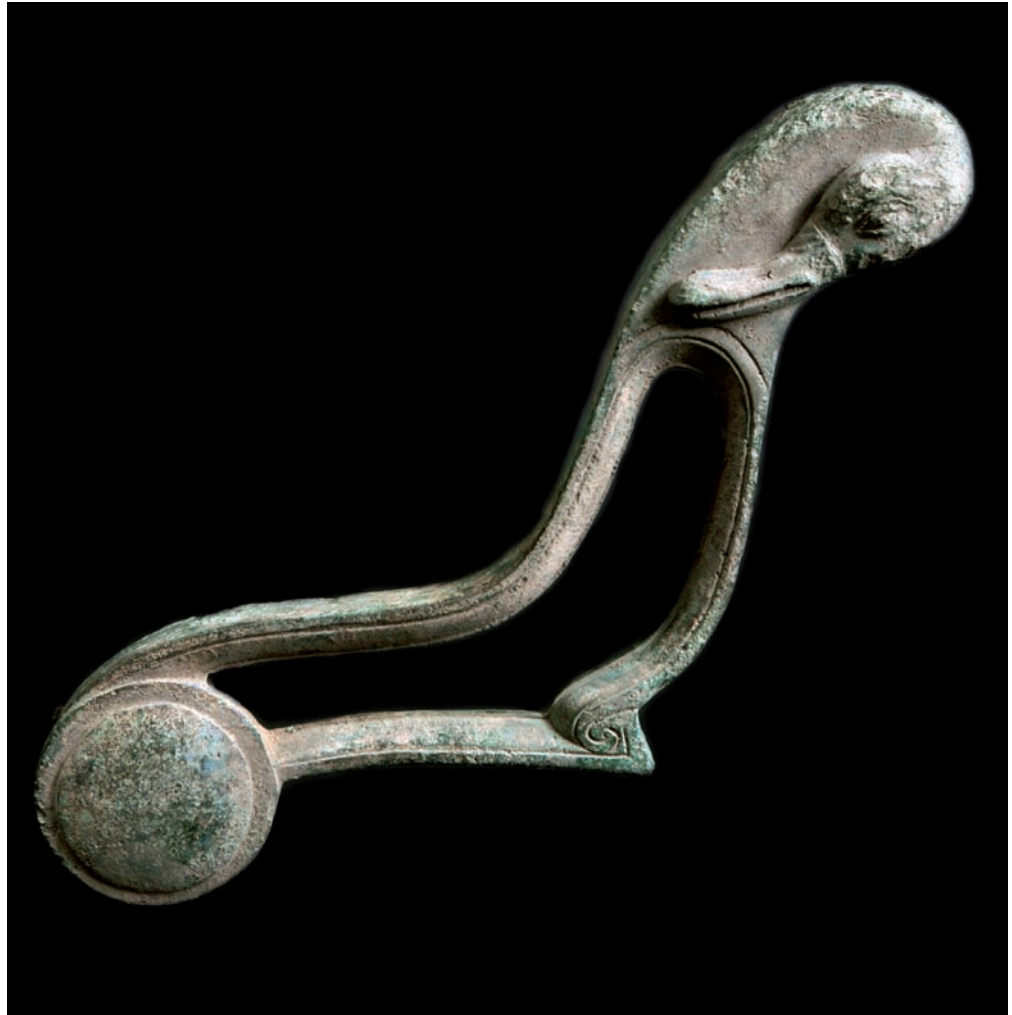
STATE OF PRESERVATION

Surfaces are corroded and several portions are encrusted.

RESTORATION PROJECT

- Cleaning and eliminating the corrosive salt by-products.
- Systematic cleaning of all the surfaces
- Dehydration
- Stabilizing the residual products of corrosion
- Consolidation of the fractures
- Protective final layer
- Creation of a support to display the piece
- Photographic documentation

Total Cost € 4.200,00



► These fascinating elements are the remains of an ancient Roman bed called a *klinos*. In Roman times, beds represented some of the most precious household decor and were often adorned with ivory and bronze elements. Bronze decorations were mainly used for adorning the fulcrum (head) of the bed. This utilization became very popular in Roman times and the elements

became increasingly precious and chiseled with ornate decoration. The heads of animals were the most popular subjects, especially horses and swans. The swinging shape of their necks and heads complemented the curved line of the heads of the beds.